



WAKE || TECH

Lead the way.

John Majernik, EI, PEM, CEM
Director of Energy, Sustainability & Transportation
jlmajernik@waketech.edu

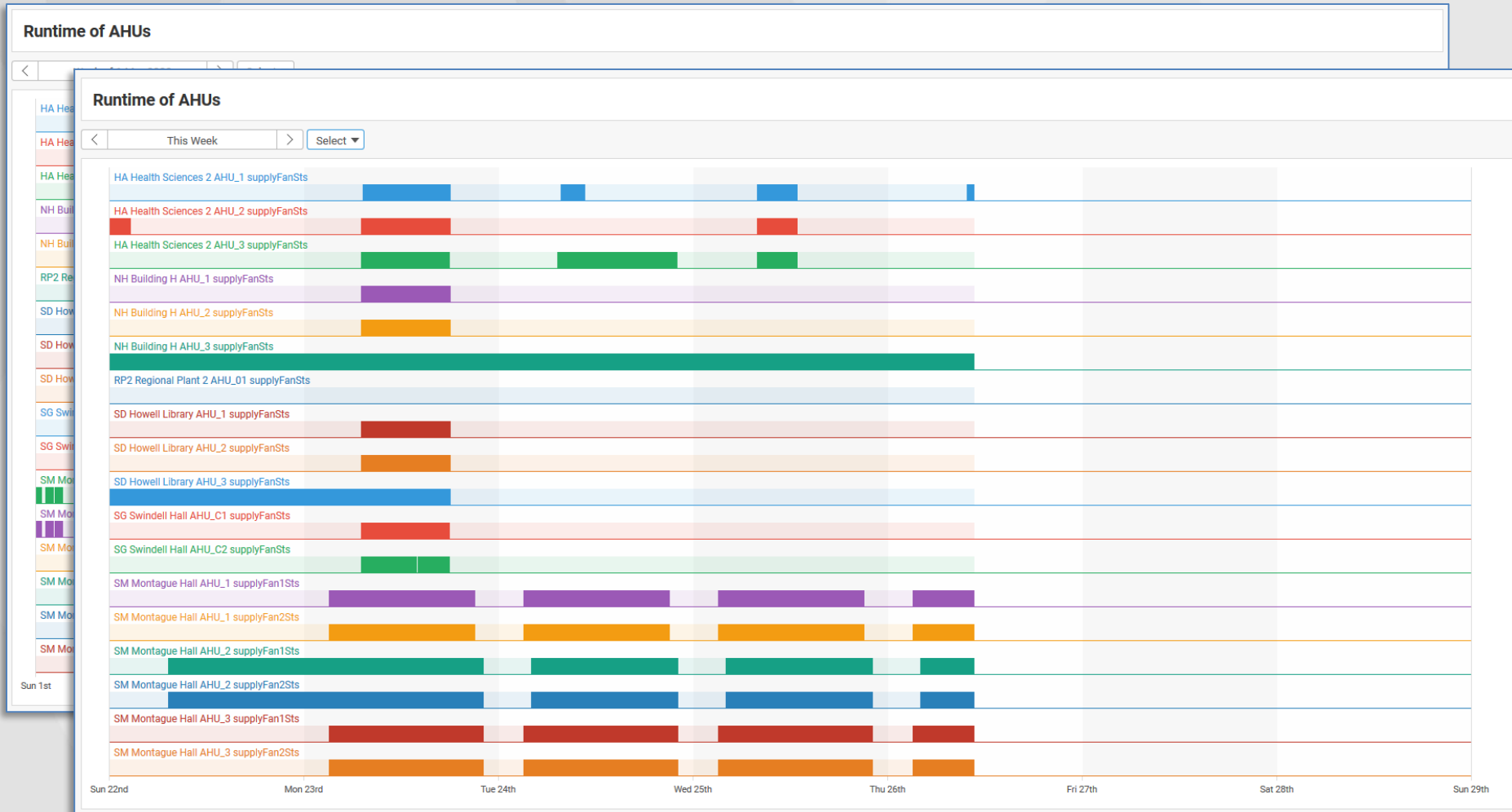
Energy Management For Building Shutdowns

- 1. Building Controls**
- 2. Lighting**
- 3. Personal Computers**
- 4. Other/Missed Opportunities**

Building Controls

- **Wake Tech:** 45 Buildings / 8 Sites / 2.5Msf
 - JCI Metasys / Niagara AX/N4 / Fin5
- **Consolidate Critical Operations** (now in 7 buildings)
 - HVAC operate by floor/zones, if possible
- **Vacant Buildings** – Placed in “Unoccupied” status
 - Schedules
 - Aware of Temp & Humidity sensitive areas
- **SkySpark Analytics** to verify ops/schedules/anomalies
 - AHU Runtimes
 - Addressing issues

SkySpark Analytics – AHU Runtimes



Lighting

- **Interior**

- Lighting Control Systems – Timers/Occ & DL Sensors
- BAS Controls (limited)
- Janitorial & MEP Staff walk-throughs
- REPORT issues / Workorder submissions

- **Exterior**

- Parking Decks – Close off & Essential lighting only
- Area lighting – Life Safety & Security, no change

Personal Computers

- **MUST Coordinate with ITS**
- **Labs & Classrooms PCs**
 - Remote software/control
 - Manual control – ITS staff walk-throughs
 - AV Equipment & Podium PCs
- **Office & Conference Rooms PCs & Displays**
 - Lower Priority – ITS will address as time permits
- **Digital Signage**
 - AV/ITS Group – Remote software/control

Other/Missed Opportunities

(Better Planning for Future Events)

- Mini-refrigerators/small appliances
- Staff refrigerators/freezers
- Ice Machines/Specialty Equipment
- Vending Equipment (be aware of contracts)
- Printers/3D Printers/Office Equipment
- Gas Pilot Lights (Food Svcs/Baking/Culinary)